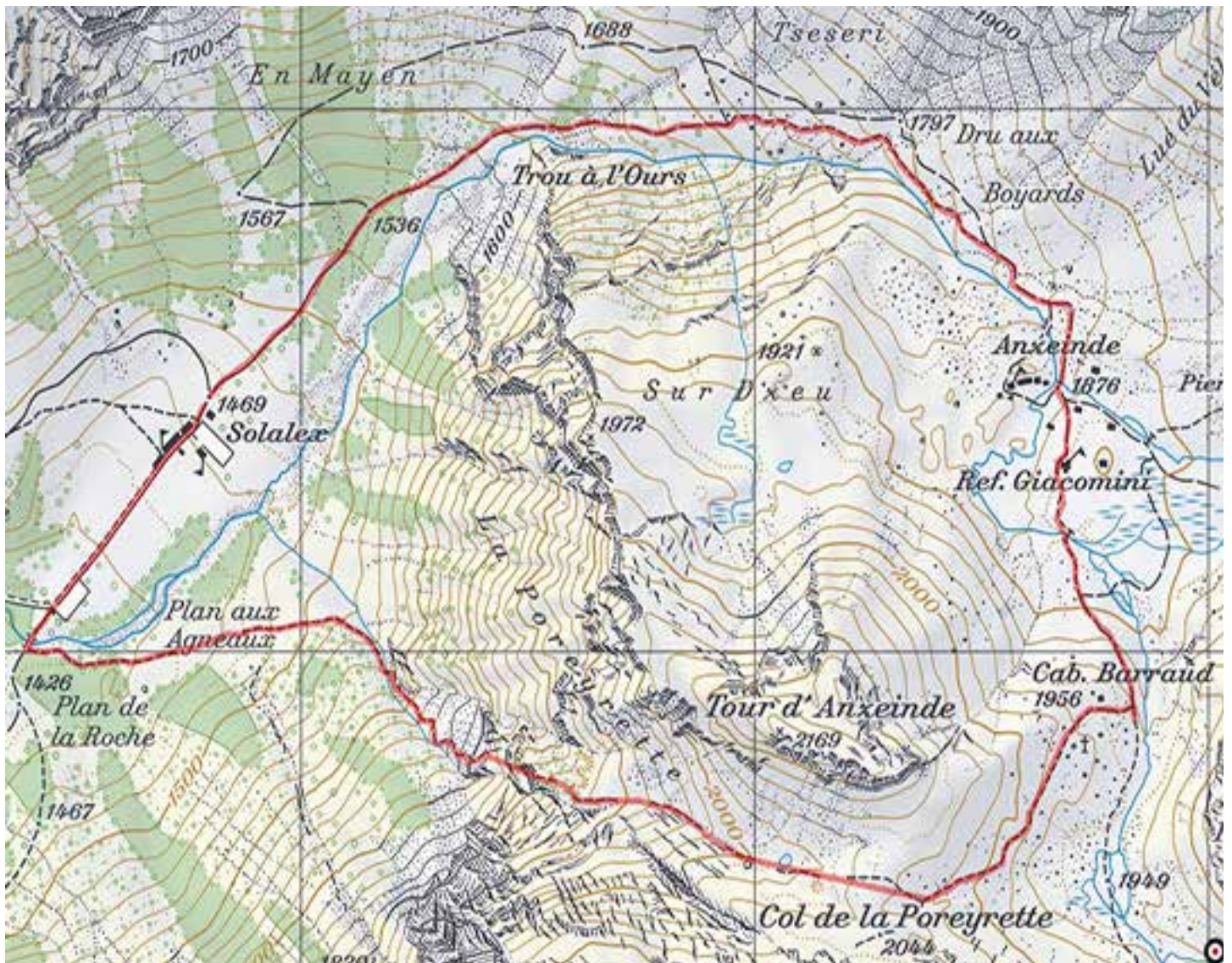




# Hikingloop.ch

Solalex - Col de Poreyrette



## Solalex col de Poreyrette

### Caractéristiques

Longueur	6.48 km
Mont. / Desc.	624 m/628 m
Alt. min. / max.	1'424 m/2'046 m
Temps à pied →	2 h 54 min



## Start

From Solalex, follow the direction, Anzeinde, ref. Giacomini, Barraud hut. When you arrive at the Barraud hut, follow a path slightly above the hut (direction SSW) to reach the Poreyrette pass. Once at the pass, you admire the Rhone plain and a small lake a few hundred meters below the pass. From the lake, the descent is very steep. After about 800 meters of descent, you arrive at the very vertiginous and delicate passage. Passage to borrow only if you have a very safe foot and the experience of mountain routes (a rope is not necessarily superfluous for some). The continuation of the descent is not a problem to reach your starting point.

[www.hikingloop.ch](http://www.hikingloop.ch)  
[info@rando-en-boucle.ch](mailto:info@rando-en-boucle.ch)  
[www.rando-en-boucle.ch](http://www.rando-en-boucle.ch)