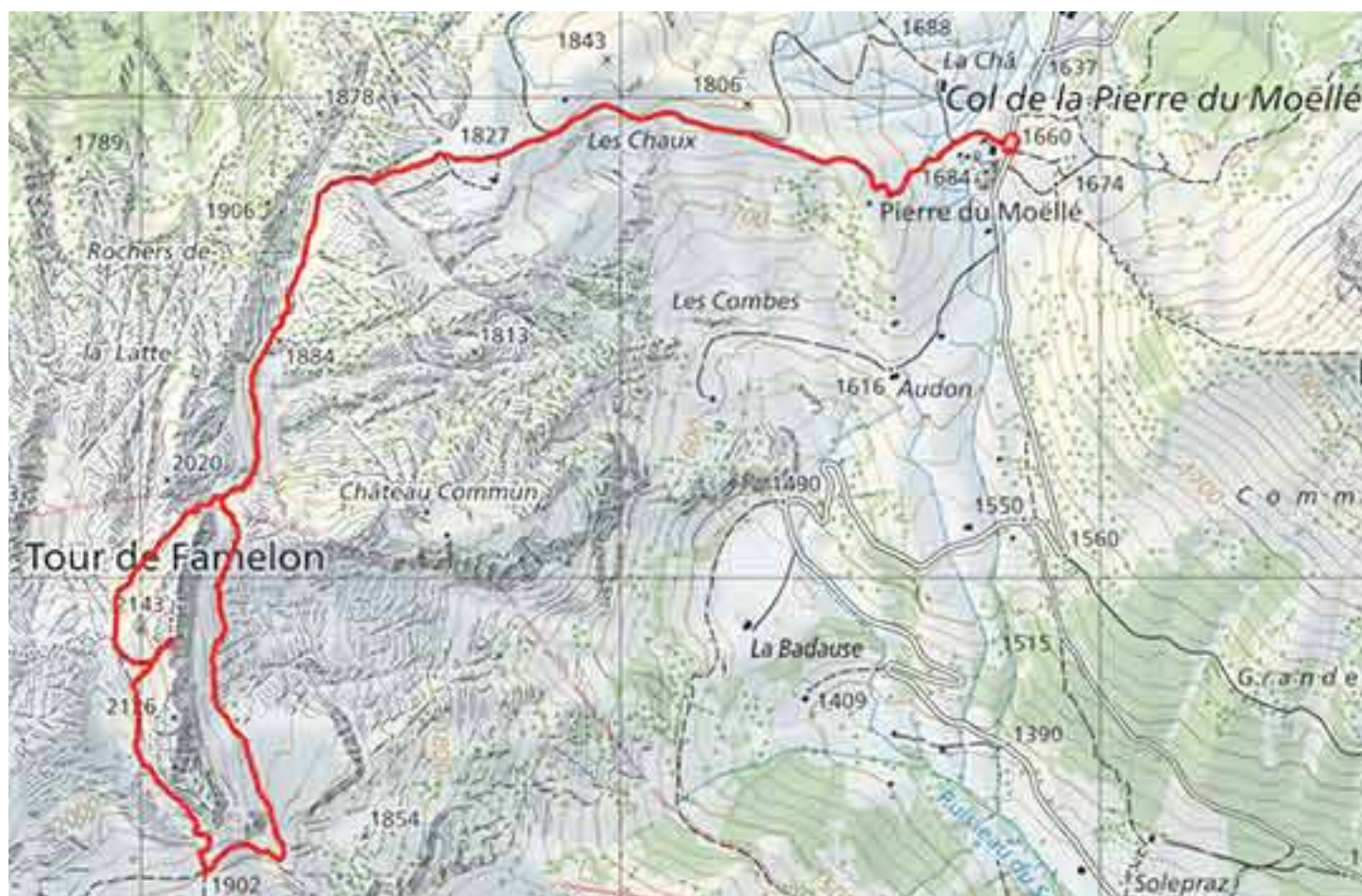




Hikingloop.ch

Tour de Famelon



Itinerary

From the Col de la Pierre du Moëllé, follow the alpine road towards Leysin and Tour de Famelon. At the place called «Les Chaux», the mountain pasture road is replaced by a footpath. Follow this path until it forks at the foot of the Tour de Famelon pass. Go up on the right to go around the Tour de Famelon by its western side. Reach the top of the Tower and admire the panorama. For the descent, continue along the foothills of the Mamelon until you reach the junction Leysin, col de la Pierre du Moëllé. Go around the Tour de Famelon on its eastern side to reach the starting point.

Useful information

Beautiful loop with magnificent views. Numerous possibilities to organise a picnic. Avoid wet and/or rainy weather. For the descent it is better to have a sure footing.

info@rando-en-boucle.ch

www.hikingloop.ch