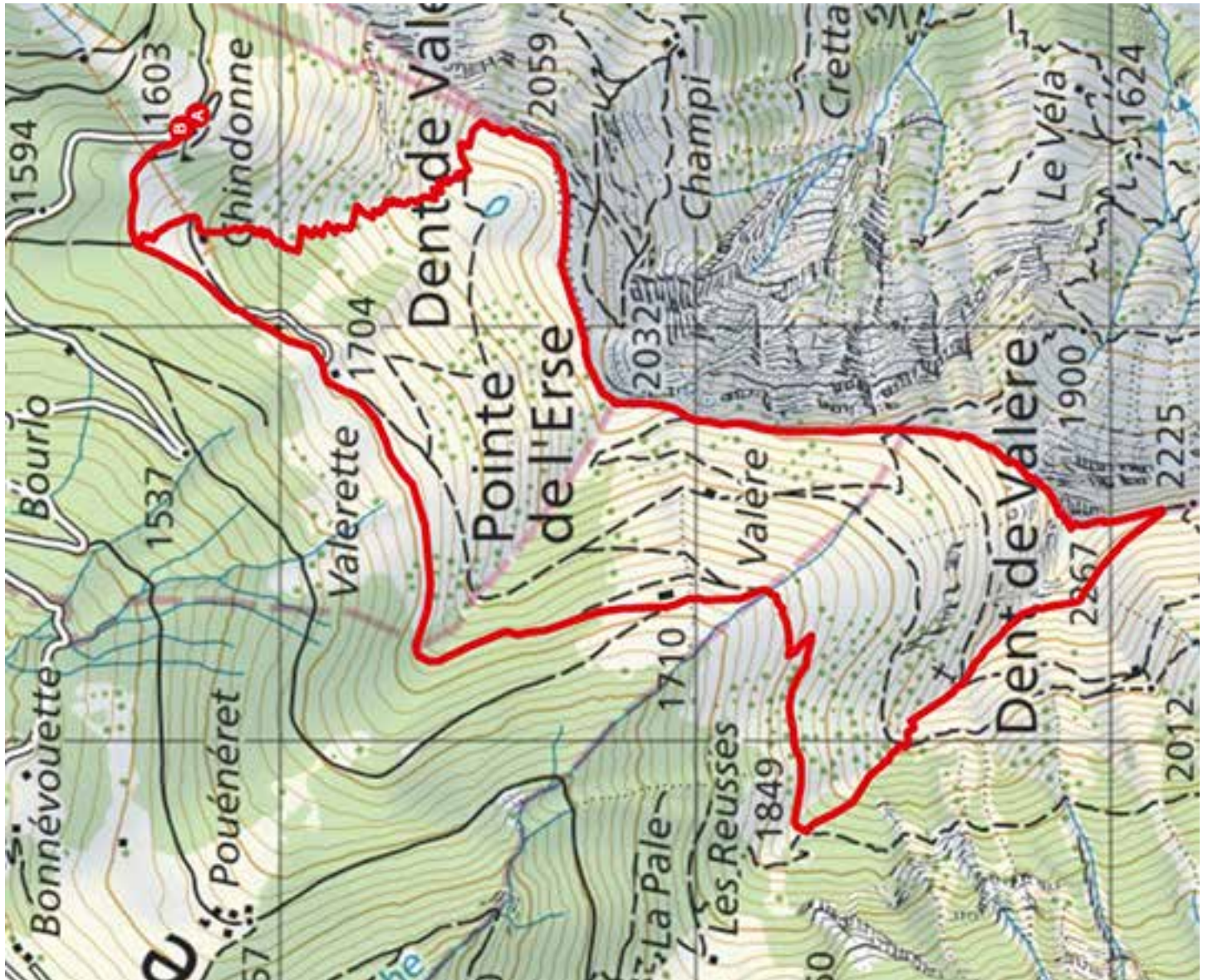




Hikingloop.ch

Dent de Valerette/Dent de Valère



Departure

From Les Giettes, follow the direction Auberge de Chindonne and park in the car park in front of the hostel. In case of heavy traffic, it is possible to park about 500 meters before the hostel.

Itinerary

At the height of the Chindonne inn, follow the direction of Dent de Valerette and join the alpine road which you follow for about 250 meters. Turn left and follow Valerette via the NW ridge of the Dent de Valerette. Once at the top, continue along the ridge towards Point de l'Erse and Dent de Valère. It is possible to avoid the T4 route of the Dent de Valère, by taking the path that crosses the NW face of the Dent de Valère starting from the altitude point 2019, to reach the altitude point 2096. Since this last point climb towards the summit of the Dent de Valère following the ridge. For the return, do not descend by route T4. There are several possibilities of return which joined all the stables located at the point of altitude 1710. From this point, continue straight in the direction of Chindonne to join the starting point

info@rando-en-boucle.ch

www.hikingloop.ch