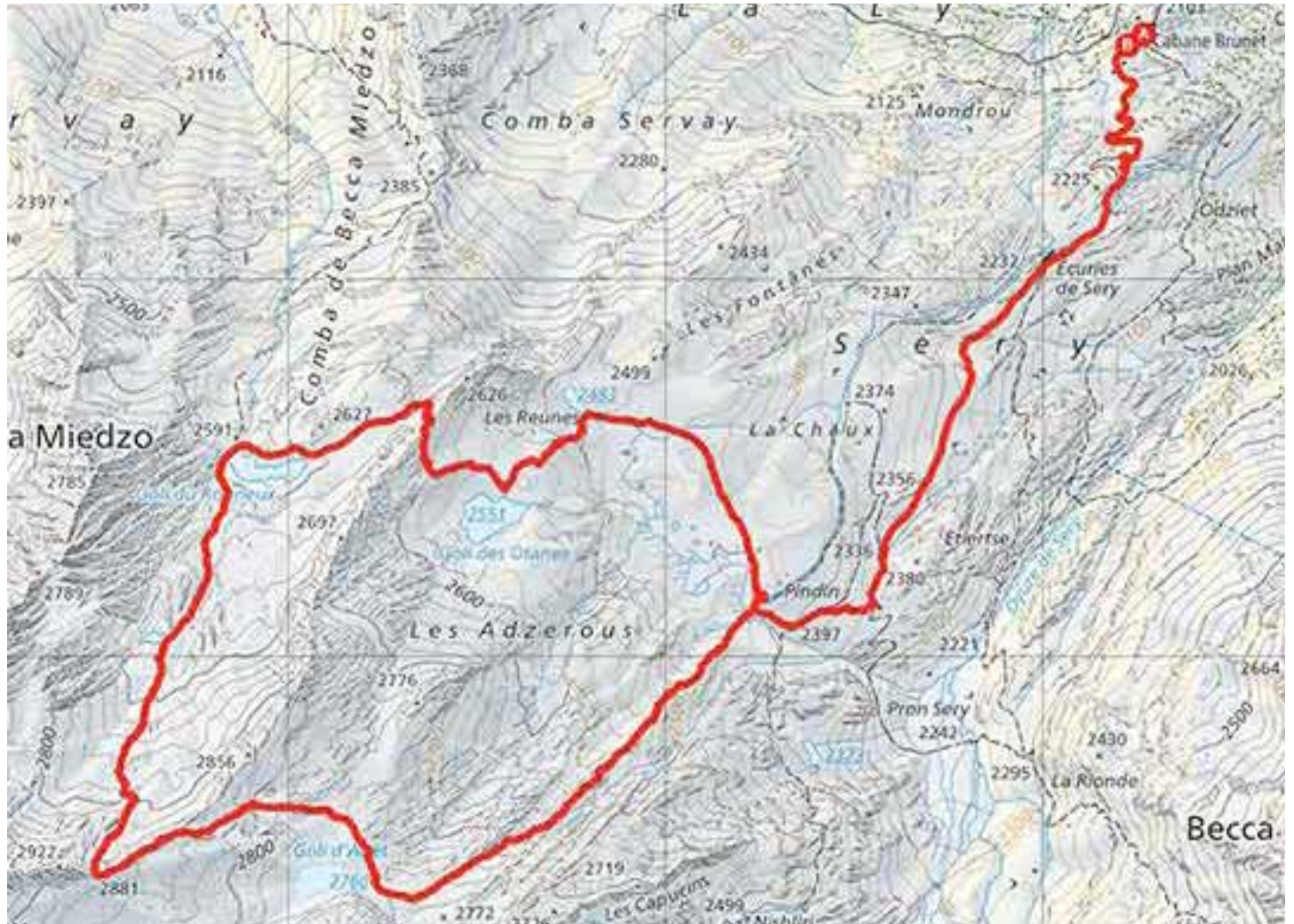




# Hikingloop.ch

## tour de Goli de Brunet



## Itinerary

From the Marcel Brunet hut follow the indications «Tour des Lacs». After about 1 hour of walking, the route arrives at the place called «Pindin». Follow «tour des lacs» to the right (west) and the blue, white marking which will be the color of the marking for the rest of the hike. It is from «Pindin» that there are some sections without a path. Until « Goli des Otanes » the route crosses several small bodies of water (depending on the progress of the season they will have more or less disappeared). The route continues downstream from the « Goli des Otanes », climbing the ridge to the west to descend the other side towards the « Goli du Rogneux ». Bypass the Goli downstream and continue south to climb the northern foothills of Mont Rogneux to altitude point 2881. Very difficult climb. Once the climb is complete, the descent towards «Pindin and Brunet» is much easier and follows a good path to « Pindin ». Continue towards the Brunet hut and the starting point.

## Useful information

There is a shuttle that leaves Fionnay for the Brunet hut during the summer season. Out of season, the hut can be reached by private vehicle. The road to the Brunet hut is very well indicated and begins about 2.5 km after the exit from the village of Lourtier.

The portion of the loop route from Pindin is indicated with blue, white markings.

[info@rando-en-boucle.ch](mailto:info@rando-en-boucle.ch)

[www.hikingloop.ch](http://www.hikingloop.ch)